

Compact Splitter Module FSC114 Series

FSC114 Series

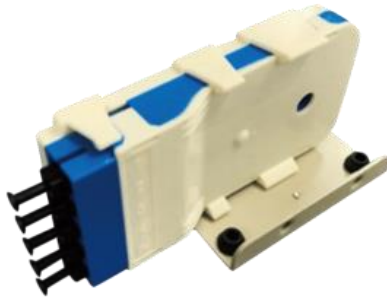


1 x 4 Splitter Module
(UPC (top), APC (bottom))



1 x 8 Splitter Module
(UPC (top), APC (bottom))

Magnet Base Mounting Example



Vertical



Horizontal



Magnet Base Body



Contact us

Features

- Installable in unused spaces of housing or on indoor wall.
- Supports connector polishing of both UPC and APC
- Additionally, there is a variant equipped with a magnet base for mounting on the FSC114 body, enabling both vertical and horizontal positioning.

FSC114 Series Module Lineup

Model Number	Input/Output Type	Number of ports / Number of Circuits	Dimensions	Assembly Dimensions (Vertical layout)	Assembly Dimensions (Horizontal layout)
FSC114-1x2-SC	SC Connector Adapter	1 input / 2 output	W 28 x H 55 x D 105 mm	W 47 x H 61 x D 109 mm	W 59 x H 36 x D 109 mm
FSC114-1x4-SC		1 input / 4 output			
FSC114-1x8-SC		1 input / 8 output	W 35 x H 57 x D 105 mm	W 47 x H 63 x D 109 mm	W 61 x H 43 x D 109 mm

Splitter Module Specifications

	1 x 2	1 x 4	1 x 8	1 x 16	1 x 32
Wavelength	1310 nm and 1550 nm				
Insertion Loss	≤ 4.3 dB	≤ 8.0 dB	≤ 11.6 dB	≤ 14.9 dB	≤ 18.4 dB
Insertion Loss Uniformity (*1)	≤ 0.9 dB	≤ 0.8 dB	≤ 1.0 dB	≤ 1.5 dB	≤ 2.0 dB
Return Loss	≥ 50 dB (UPC polishing) / ≥ 50 dB (APC polishing)				

*1 Loss uniformity in the table does not include input/output connector loss.



Contact us